

Klasa VI - Ćwiczenia

1. Zbuduj interwały.



A musical staff in treble clef containing 14 half notes. Below the staff, numbers 1 through 8 are placed under specific notes, with arrows indicating the intervals between them: 1 (under the 1st note), 2> (under the 2nd note), 2 (under the 3rd note), 3> (under the 4th note), 3 (under the 5th note), 4 (under the 6th note), 4< (under the 7th note), 5 (under the 8th note), 5> (under the 9th note), 6> (under the 10th note), 6 (under the 11th note), 7 (under the 12th note), 7< (under the 13th note), and 8 (under the 14th note).

2. Nazwij interwały.

3> ..... 4 .....

5> ..... 6> .....

7< ..... 8 .....

3. Zbuduj tercje i kwarty w C-dur. Podpisz.

TERCJE



A musical staff in treble clef with a treble clef sign above it. It contains seven whole notes: C4, E4, G4, B4, C5, E5, G5. The word "TERCJE" is written above the staff.

KWARTY



A musical staff in treble clef with a treble clef sign above it. It contains seven whole notes: C4, F4, Bb4, E5, A5, D6, G6. The word "KWARTY" is written above the staff.

4. Zbuduj trójdźwięki: durowy, molowy, zmniejszony i zwiększony.  
W drugiej linijce dopisz przewroty podanych trójdźwięków i określ je.



A musical staff in treble clef with a treble clef sign above it. It contains four whole notes: C4, E4, G4, C5. A 3/4 time signature is written at the end of the staff.



A musical staff in treble clef with a treble clef sign above it. It contains eight notes: C4, E4, G4, Bb4, D5, F5, A5, C6. A 3/4 time signature is written at the beginning of the staff.

5. Zbuduj trójdźwięki w gamie C-dur. Podpisz.

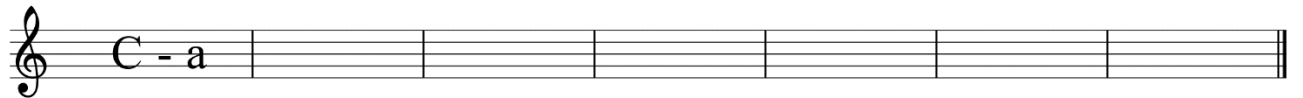


A musical staff in treble clef with a treble clef sign above it. It contains eight whole notes: C4, E4, G4, Bb4, D5, F5, A5, C6.

6. Określ Trójdźwięki.



7. Uzupełnij znaki przykluczowe i gamy równoległe wg wzoru.



8. Napisz gamy.

a – moll harmoniczna

Triada



G – dur

F - dur



e – moll eolska

d – moll dorycka



B – dur

Triada



9. Zbuduj dominanty septymowe w postaci zasadniczej.

